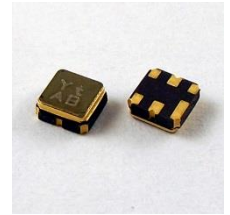


- Low-loss RF filter for mobile systems
- Low amplitude ripple
- No matching network required for operation at 50Ω



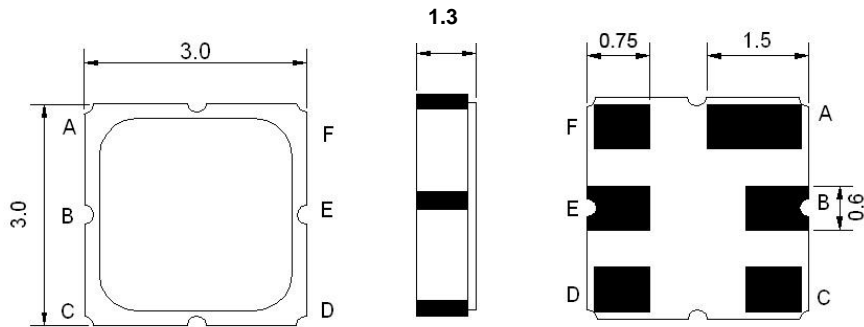
## Electrical Characteristics

MAXIMUM RATING				
PARAMETERS DESCRIPTION	UNIT	MINIMUM	TYPICAL	MAXIMUM
Operating Temperature Range	°C	-40	-	+85
Storage Temperature Range	°C	-40	-	+85
Maximum DC Voltage	V	-	-	5
Maximum Input Power	dBm	-	-	27
Source Impedance	Ω	-	50	-
Load Impedance	Ω	-	50	-
Length x Width	mm <sup>2</sup>	-	3.0 x 3.0	-
Height	mm	-	-	1.3

ELECTRICAL SPECIFICATION				
PARAMETERS DESCRIPTION	UNIT	MINIMUM	TYPICAL	MAXIMUM
Center Frequency	MHz		1747.50	-
Insertion Loss within 1710.00 ~ 1765.00 MHz	dB	-	2.5**	4.0* 5.0****
Insertion Loss within 1765.00 ~ 1785.00 MHz	dB	-	2.5**	4.0*** 5.0****
Group Delay Ripple within 1710.00 ~ 1785.00 MHz	ns		18	40
Amplitude Ripple (p-p) within 1710.00 ~ 1785.00 MHz	dB		1.5**	3.0*** 3.8****
<b>Absolute Attenuation:</b>				
DC ~ 960.00MHz	dB	20	25	
960.00MHz ~ 1690.00MHz	dB	20	25	
1690.00MHz ~ 1693.00MHz	dB	15*** 10****	32**	
1802.00MHz ~ 1805.00MHz	dB	15*	32**	
1805.00MHz ~ 1880.00MHz	dB	28	34	
1880.00MHz ~ 3200.00MHz	dB	25	31	
3200.00MHz ~ 5000.00MHz	dB	4	28	
Input/Output VSWR within 1710 ~ 1785.00 MHz				2.2:1

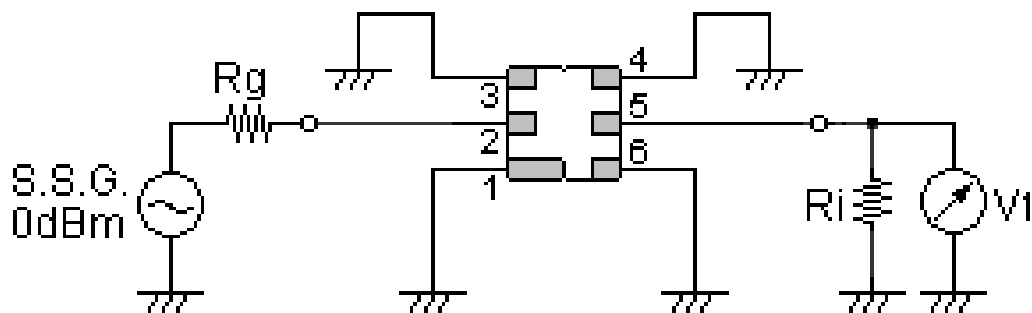
**Note:** \* : -40°C  
 \*\* : +25°C  
 \*\*\* : +85°C  
 \*\*\*\* : +90°C

## Package Dimensions



Pin Description	
A, C, D, F	Ground
B	Input
E	Output

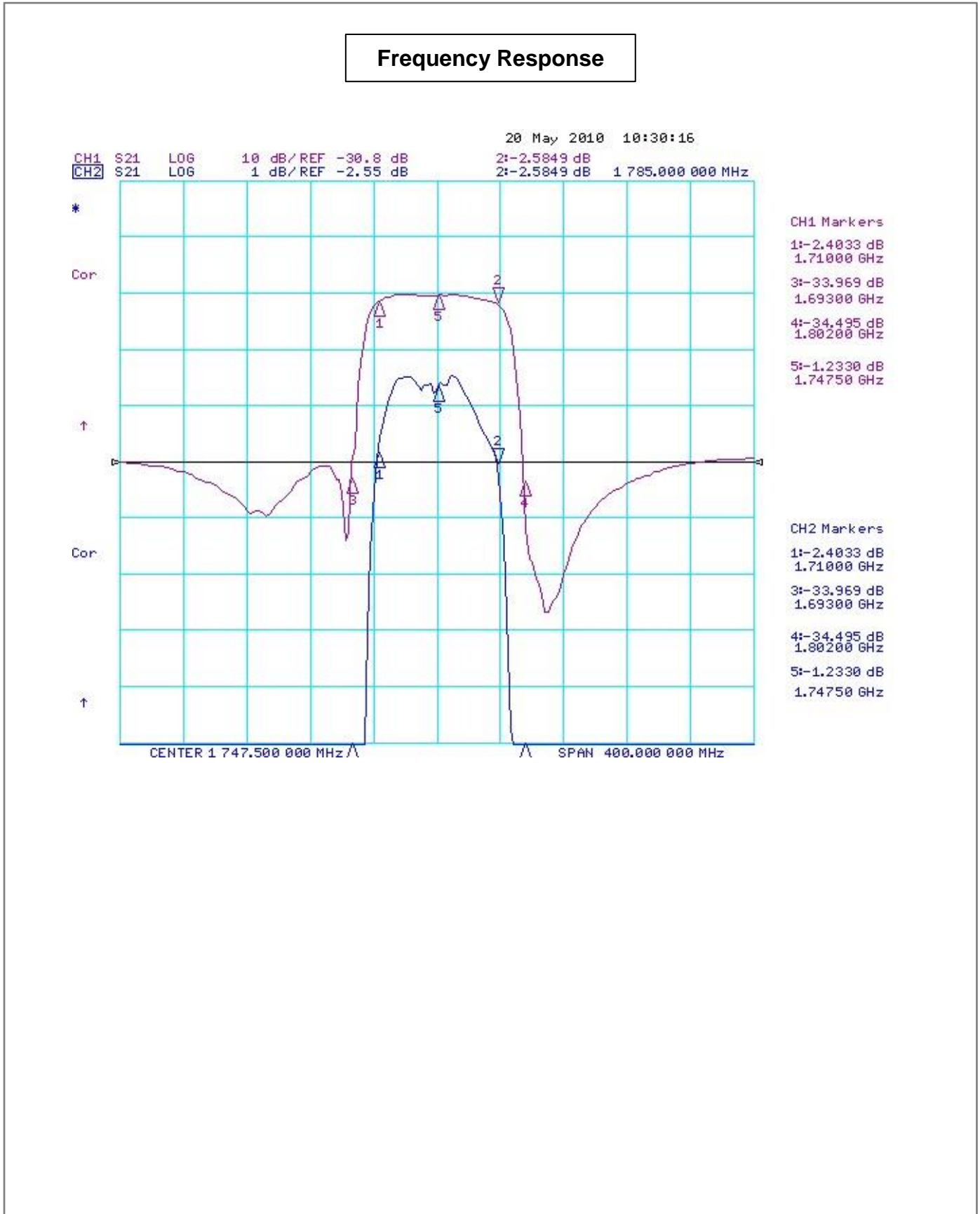
## Testing Environment



Source Impedance: 50  $\Omega$

Load Impedance: 50  $\Omega$

## Frequency Characteristics



**Frequency Response**

